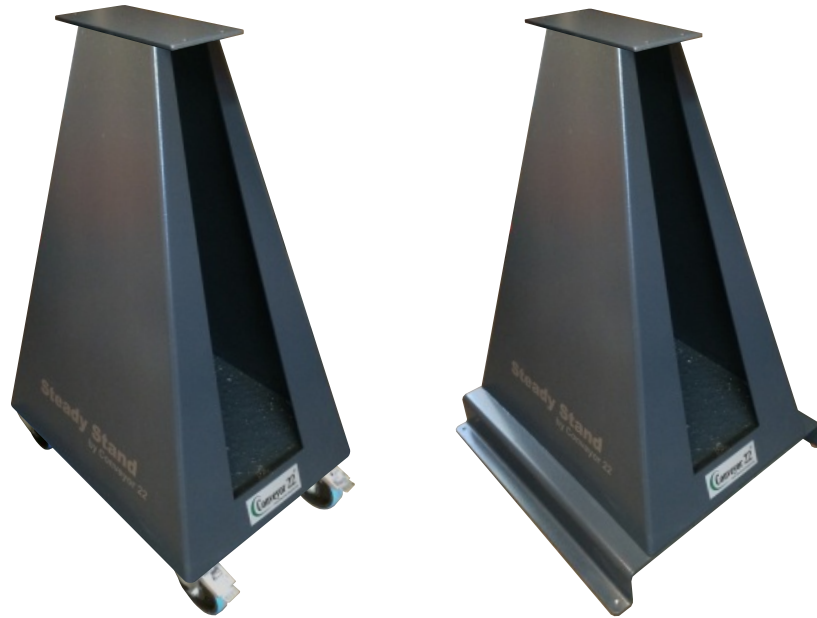


**Steady floor stand for ECS-141 and ECS-121 electric shaker conveyor**

Steady Stand is designed to move the complete conveyor unit between various manufacturing machines



**Technical data**

<b>Steady Stand with wheel</b> (ball bearing wheel with foot operated brake and polyurethan wear surface)	<b>4 pcs. 125 mm (4,921")</b>
<b>Steady Stand with integrated fork lift attachment</b>	<b>(polyurethan machine feet)</b>
<b>Material Surface</b>	<b>5mm laser cut high strength steel painted grey</b>
<b>Maximum attached weight on the Steady Stand</b>	<b>100 Kg (220,46 lb)</b>
<b>Weight of the Steady Stand</b>	<b>110 Kg (242,508 lb)</b>
<b>Dimensions</b>	
<b>Steady Stand with wheel (L x W x H) 700 x 500, (27,559" x 19,685"), height as requested (maximum 1300 mm (51,181 lb))</b>	
<b>Steady Stand with integrated fork lift attachment (L x W x H) 700 x 680, (27,559" x 26,772"), height as requested (maximum 1300 mm (51,181 lb))</b>	

